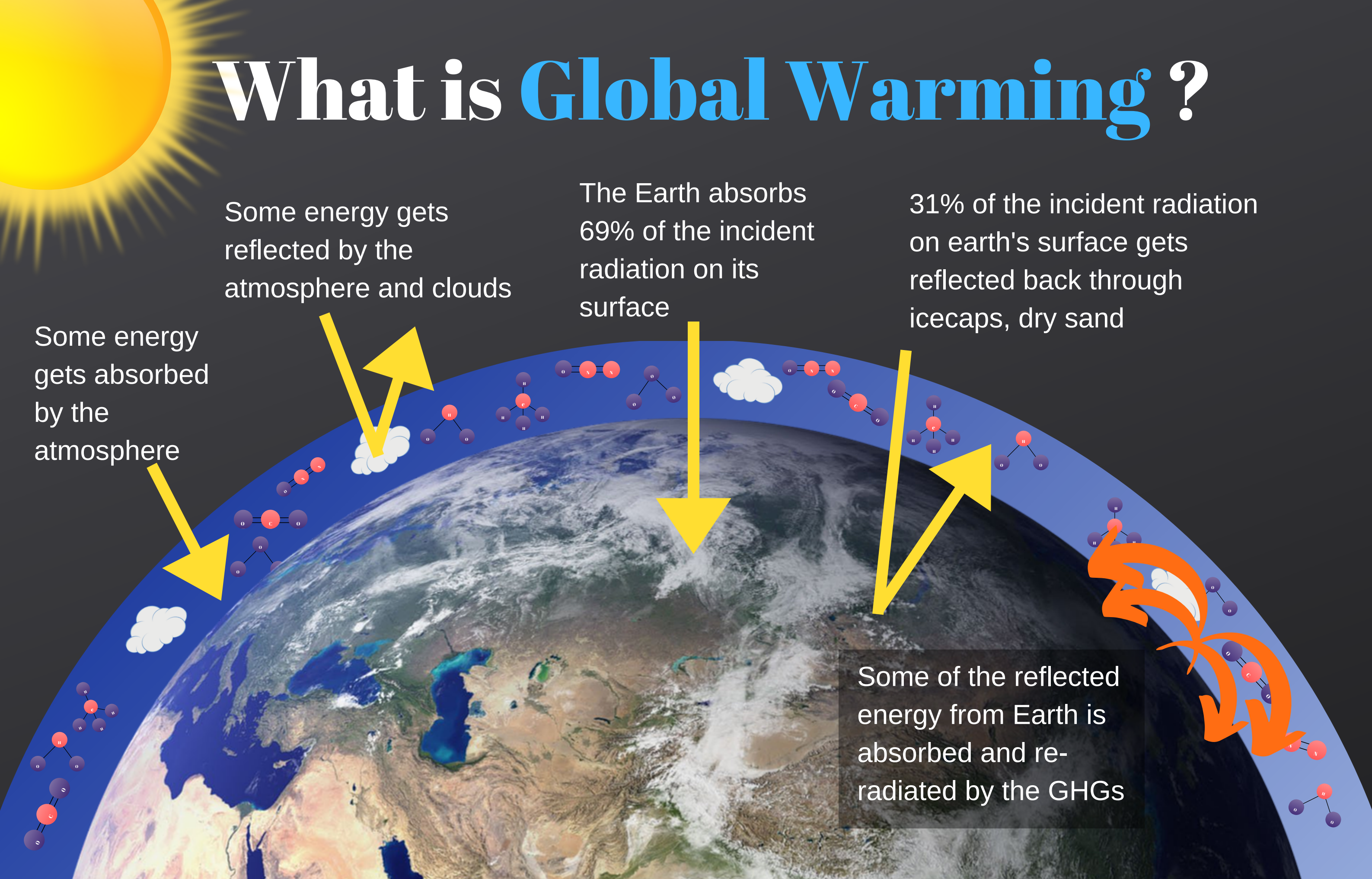
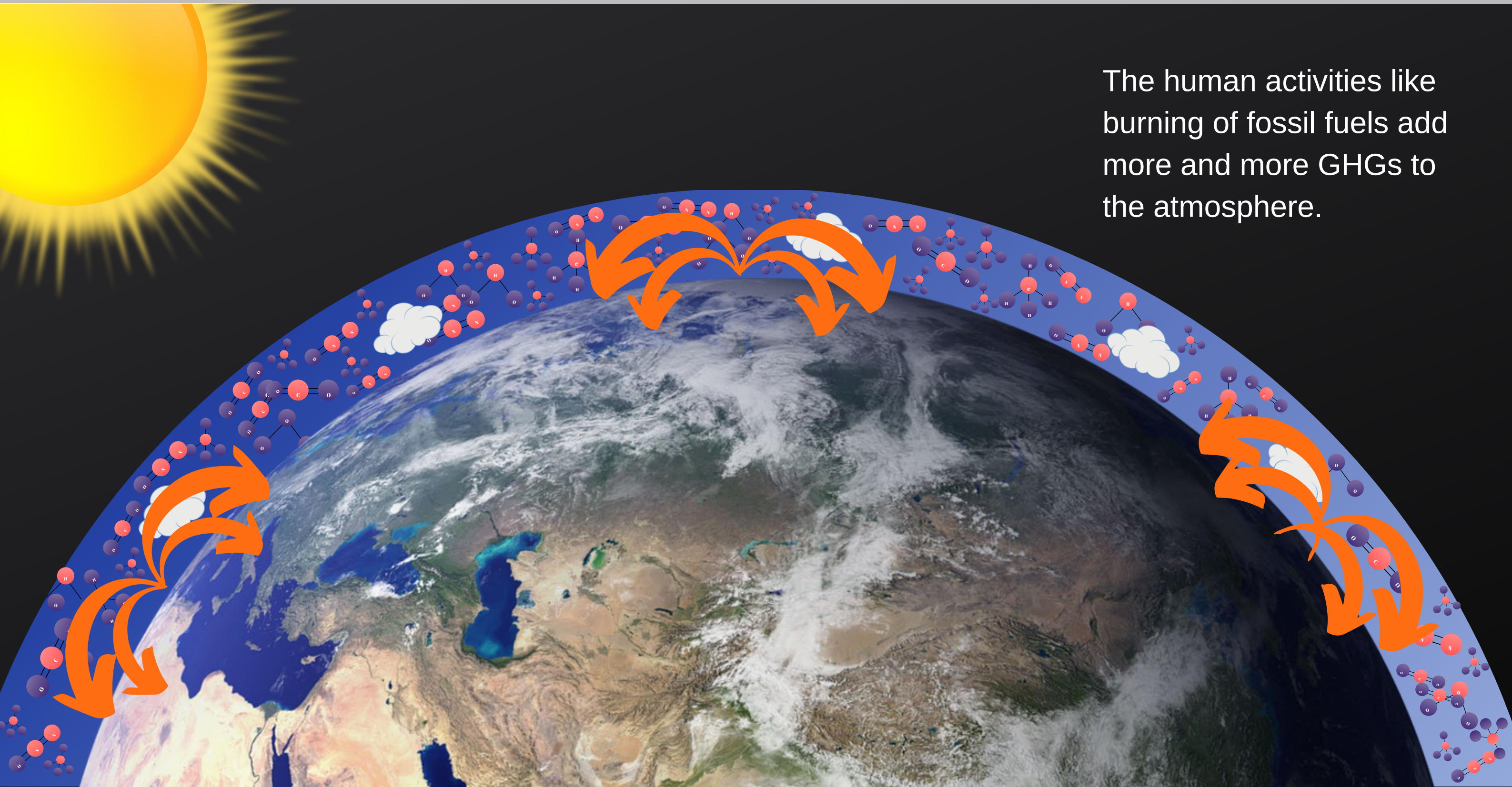


What is Global Warming?



If the Earth's surface absorbs 69% of the heat and reflects 31% of it then the Earth's temperature should have been -18°C but the Earth's average temperature is 15°C because the Green house gases present in the atmosphere absorbs and re-radiates the energy back to the Earth keeping it warm like a blanket.



With more and more GHGs being added to the atmosphere due to human activities, this blanket is getting thicker, absorbing more energy and re-radiating it back, making Earth warmer. This rise in temperature of earth due to human activities is called Global warming.