



CREATE A BUTTERFLY GARDEN!

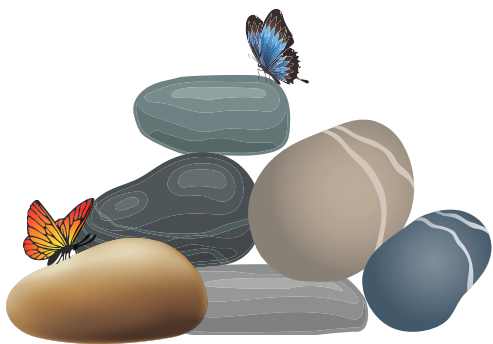
Butterflies are bio-indicators of a healthy environment and ecosystem- they are highly sensitive to changes in climate, pollution levels, and air pollution.

Butterflies are an important part of the food chain and excellent pollinators after bees, wasps and flies – without these wonderful insects, we would have a lot fewer plants!

1

SELECT SITE FOR BUTTERFLY GARDEN

Choose a site that has some sun but is also sheltered from the wind. Include a few trees and shrubs for roosting at night and for cooling off on the hottest days.



REMEMBER THE ROCKS

Add one or two large, flat rocks in the sun so butterflies have a place to bask when mornings are cool.

2

3

PROVIDE WATER

Since butterflies cannot drink from open water, provide them with a "puddle" by filling a container, such as an old birdbath, with wet sand where they can perch and drink safely.



ADD THE PLANTS

Add nectar and food plants. Different butterfly larvae feed on different plants, so research the butterflies native to your region to determine what to plant.

4

FUN FACT-



Butterflies have taste sensors on their feet which help female butterflies to identify their host plants